

## QUALITY GUARANTEE & WARRANTY

**KENNEDY TOOLS** carry a one year manufacturer's warranty.  
**KENNEDY TOOLS** are designed and manufactured to the highest of standards and specifications.

Assuring the quality and performance required by all sectors of industry.

**KENNEDY TOOLS** are fully guaranteed against faulty materials and workmanship.

Should they be found to be defective, they will either be repaired or replaced free of charge (fair wear and tear and/or misuse excepted).

**Please retain supplier invoice as proof of purchase.**

## THE ENVIRONMENT



Always dispose of unwanted tools, accessories and packaging materials in an environmentally friendly manner.

# KENNEDY<sup>®</sup>

## QUALITY INDUSTRIAL TOOLING

## ROLLER CABINETS & TOP CHESTS

### ORDER CODES

**KEN-594-2020K**

**KEN-594-2120K**

**KEN-594-2320K**

**KEN-594-2620K**

**KEN-594-2040K**

**KEN-594-2220K**

**KEN-594-2420K**

**28" 3 DRAWER ROLLER CABINET - RED**

**28" 5 DRAWER ROLLER CABINET - RED**

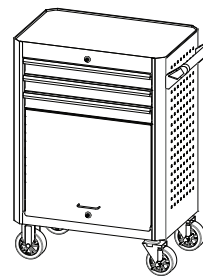
**28" 7 DRAWER ROLLER CABINET - RED**

**36" 5 DRAWER ROLLER CABINET - RED**

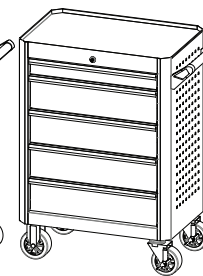
**28" 3 DRAWER TOP CHEST - RED**

**28" 6 DRAWER TOP CHEST - RED**

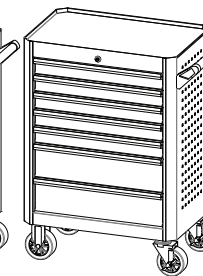
**28" 12 DRAWER TOP CHEST - RED**



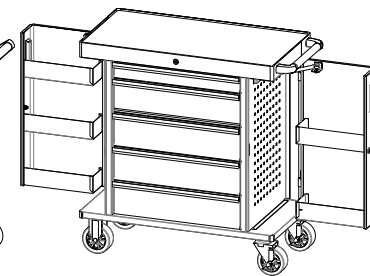
**KEN-594-2020K**



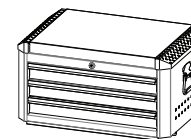
**KEN-594-2120K**



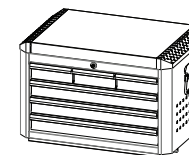
**KEN-594-2320K**



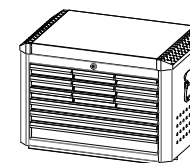
**KEN-594-2620K**



**KEN-594-2040K**



**KEN-594-2220K**



**KEN-594-2420K**

Kennedy Tools continually strives to improve its products. Specifications may change without prior notice.

**KENNEDY TOOLS** Wigston, Leicester, England, LE18 2FS. [www.kennedy-tools.co.uk](http://www.kennedy-tools.co.uk)

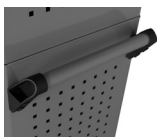
Kennedy is a registered trade mark of The Kennedy Group Ltd.

## INSTRUCTION MANUAL

Please retain this information for future reference.



## SPARES & ACCESSORIES



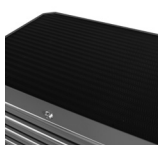
Side Handle  
For 28" Roller Cabinets  
**SPR-567-2890K**



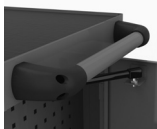
Gas Struts For 28" Top Chests (SET OF 2)  
**KEN-594-6600K**



Metal Hinges (SET OF 2)  
For 28" Top Chests  
**SPR-567-3300K**



10mm EVA Foam Top Mat  
For 28" Roller Cabinets  
**SPR-567-2800K**



Side Handle  
For 36" Roller Cabinet  
**SPR-567-7810K**



Gas Struts For 36" Roller Cabinet (SET OF 2)  
**SPR-567-7820K**



10mm EVA Foam Top Mat  
For 36" Roller Cabinet  
**SPR-567-7830K**



Tote Tray  
**KEN-594-1640K**



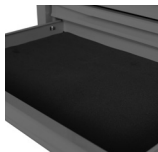
Lock & Key Set  
(inc. 2 Keys)  
**SPR-567-2870K**



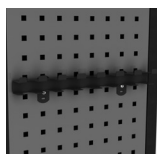
Blank Key  
**SPR-567-2220K**



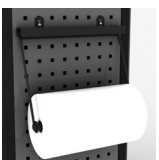
4 x 125mm PP Caster Wheels  
(2 Fixed, 2 Swivel with Brake)  
**SPR-567-2910K**



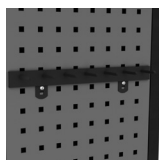
2.5mm Drawer Liner  
**SPR-567-2810K**



Screwdriver Holder  
For 7 pcs  
**KEN-594-1630K**



320mm Paper Roll Holder  
**KEN-594-1560K**



Hook Rack  
For 7 pcs  
**KEN-594-1610K**



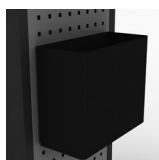
Can Holder  
**KEN-594-1590K**



Multifunctional Tray  
**KEN-594-1650K**



Side Tray  
**KEN-594-1660K**



Waste Bin  
**KEN-594-1670K**



ABS Work Top Tray  
**KEN-594-1580K**



Drawer Slides (QTY 2)  
**SPR-567-7890K**



Drawer Slides (QTY 2)  
**SPR-567-7900K**

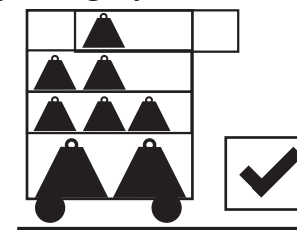
## SAFETY INSTRUCTIONS

**KENNEDY** Roller cabinets and top chests are designed to help you work safely and efficiently. Storage equipment can be dangerous if the correct operating procedures are not followed. Safety procedures and assembly instructions are as follows:

- Read, study and understand all warnings and operating instructions before use.
- **DO NOT** alter the product in any way.
- **DO NOT** weld lock bars or dollies onto the unit.
- **DO NOT** mount the roller cabinet or top chest onto any moving object such as a truck, van or lorry etc.

### LOADING:

- **DO NOT** load from the top drawer first.
- **DO NOT** drop tools into the drawers.
- **DO NOT** completely fill only one drawer, evenly distribute the weight.
- **DO NOT** load a drawer from the front.
- **DO NOT** exceed the maximum load capacity for the drawers. Please see specifications section for the correct capacity.
- **DO NOT** exceed the maximum load capacity for the castor wheels which includes the product weight and content weight also top chest weight if placing one on top. Please see specifications section for the correct capacity.



### USE:

- **DO NOT** open more than one loaded drawer at a time as this may cause the unit to tip and cause serious injury.
- **ALWAYS** apply the brakes on the castor wheels when unit is not in motion.
- **DO NOT** stand on this unit.
- **DO NOT** slam the drawers shut.

### MOVEMENT:

- **BEFORE** attempting to move the unit, make sure all drawers are fully closed and locked. Failure to do so may result in serious injury.
- **DO NOT** pull to move the unit, always push.
- **NEVER** tow the unit with any equipment.
- **ALWAYS** place the unit on a flat level surface.

## SPECIFICATIONS

	3 DRAWER CABINET (28")	5 DRAWER CABINET (28")	5 DRAWER CABINET (36")	7 DRAWER CABINET (28")
ORDER CODE:	KEN-594-2020K	KEN-594-2120K	KEN-594-2620K	KEN-594-2320K
DRAWER LOAD CAPACITY (EACH):	30-35kg	30-35kg	30-35kg	30-35kg
DRAWER DIMS (W x L x D mm):	3@ 568x398x75	1@ 568x398x75 4@ 568x398x154	1@ 568x398x75 4@ 568x398x154	5@ 568x398x75 2@ 568x398x154
STORAGE LOCKER DIMS (W x L x D mm):	704x393x450	N/A	N/A	N/A
LID COMPARTMENT DIMS (W x L x D mm):	N/A	N/A	N/A	N/A
TOTAL DRAWER LOAD CAPACITY:	105kg	175kg	175kg	245kg
STATIC LOAD CAPACITY:	450kg	450kg	450kg	450kg
CASTER WHEEL SIZE (DIA.):	125mm	125mm	125mm	125mm
OVERALL WEIGHT:	50.0kg	56.0kg	67.5kg	60.0kg
DIMENSIONS (W x D x H mm):	706x461x844	706x461x844	907x474x815	706x461x844

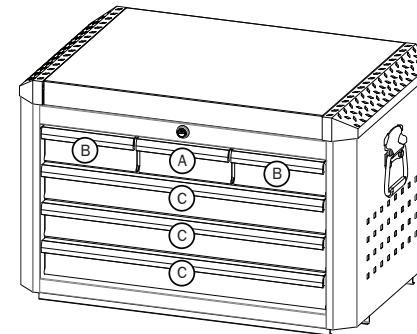
	3 DRAWER TOP CHEST	6 DRAWER TOP CHEST	12 DRAWER TOP CHEST
ORDER CODE:	KEN-594-2040K	KEN-594-2220K	KEN-594-2420K
DRAWER LOAD CAPACITY (EACH):	30-35kg	30-35kg	30-35kg
DRAWER DIMS (W x L x D mm):	3@ 568x398x75	3@ 168x398x75 3@ 568x398x75	9@ 168x398x50 2@ 568x398x50 1@ 568x398x75
STORAGE LOCKER DIMS (W x L x D mm):	N/A	N/A	N/A
LID COMPARTMENT DIMS (W x L x D mm):	580x560x80	580x560x80	580x560x80
TOTAL DRAWER LOAD CAPACITY:	105kg	210kg	210kg
STATIC LOAD CAPACITY:	245kg	350kg	350kg
CASTER WHEEL SIZE (DIA.):	N/A	N/A	N/A
OVERALL WEIGHT:	36.5kg	40.4kg	45.5kg
DIMENSIONS (W x D x H mm):	706x461x375	706x461x454	706x461x481

## ORDERING OF SPARE DRAWER SLIDES

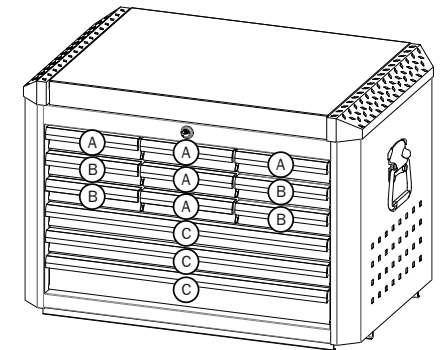
There are two types of drawer slides used between the Kennedy roller cabinets and top chest (as can be seen in the 'Spares & Accessories' on page 10). Below will help you distinguish which type of drawer slide you will require.

**PLEASE NOTE:** Drawer slides vary from drawer to drawer. Drawer "B" includes two different slides.

Roller Cabinet/ Top Chest Order Code	Spare Drawer Slides Required	Top Chest Drawer	Drawer Slides Required
KEN-594-2020K KEN-594-2120K KEN-594-2320K KEN-594-2620K KEN-594-2040K	SPR-567-7900K	Drawer A	SPR-567-7890K
		Drawer B (one of each slide)	SPR-567-7890K & SPR-567-7900K
KEN-594-2220K KEN-594-2420K	SPR-567-7890K & SPR-567-7900K (See diagram below for different slide positions)	Drawer C	SPR-567-7900K



**KEN-594-2220K**



**KEN-594-2420K**

## ASSEMBLY

### HOW TO INSTALL THE GAS STRUTS (KEN-594-6600K) FOR THE TOP CHESTS ONLY:

#### PLEASE NOTE:

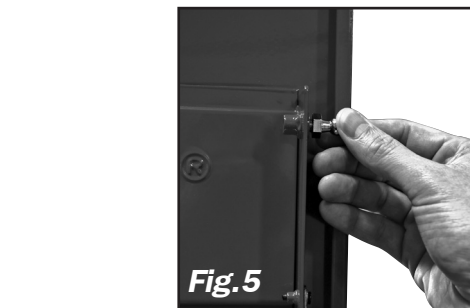
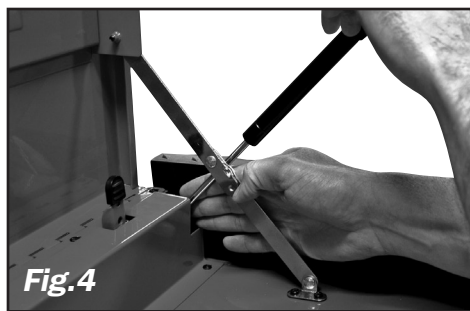
All 3 models of the 28" Top Chests come supplied with the standard metal hinges. However, you may wish to replace them with Gas Strut Hinges (sold separately):

**ORDER CODE: KEN-594-6600K**

#### HOW TO INSTALL:

**CAUTION! WHILST INSTALLING THE GAS STRUTS KEEP IN PLACE THE ORIGINAL HINGES UNTIL THE GAS STRUTS ARE SECURLY IN PLACE TO AVOID ACCIDENTAL CLOSURE OF THE TOOL CHEST LID.**

1. Open the lid to the tool chest fully and make sure the metal hinges fully lock to avoid the lid accidentally closing.
2. Place the metal end of the gas strut onto the ball, push firmly so that the ball socket on the gas strut securely fits into place (See Fig.4).  
**Repeat on the opposite side.**
3. Screw the ball joint into the hole indicated in Fig.5.  
**Repeat on the opposite side.**
4. Carefully unlock the lid on the original hinges and lower it slightly into position to meet the ball joint on the gas strut. Firmly push into place to secure (See Fig.6).  
**Repeat on the opposite side.**
5. Lower and lift the lid to test that the gas struts are securly fitted.
6. Once the gas struts are securely fitted on both sides remove the original metal hinges by removing the screws.



## ASSEMBLY

### HOW TO ASSEMBLE THE 28" ROLLER CABINETS:

#### BEFORE YOU ASSEMBLE:

Check that you have all the items from the parts list. The parts list and assembly covers all 3 models of the 28" roller cabinets.

**The top chests do not require assembly.**

**DO NOT** discard the packaging materials until all parts are accounted for.

#### HOW TO ASSEMBLE THE 28" ROLLER CABINETS:

Please note: we advise that 2 or more people should assemble the roller cabinet and top chest.

**See Fig.1 below.**

1. Lay the cabinet on it's side on a protective surface. Attach and fasten the casters to the bottom of the cabinet making sure that the swivel casters are on the same side that the handle will be on.
2. Attach and fasten the handle to the side you have attached the swivel casters.

#### HOW TO ASSEMBLE TOP CHEST ONTO ROLLER CABINET:

**See Fig.2 below.**

1. Remove the top mat off the trolley cabinet.
2. Carefully place the tool chest on top of the fully assembled roller cabinet.

	PART	QTY
1.	 <b>ROLLER CABINET</b>	1
2.	 <b>HANDLE</b>	1
3.	 <b>M6 SCREW</b>	4
4.	 <b>M8 WASHER</b>	16
5.	 <b>M8 SPLIT WASHER</b>	16
6.	 <b>M8*20 BOLT</b>	16
7.	 <b>SWIVEL CASTER</b>	2
8.	 <b>FIXED CASTER</b>	2

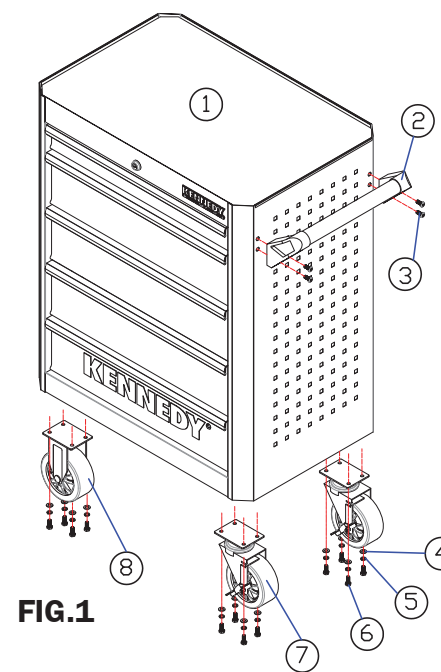


FIG.1

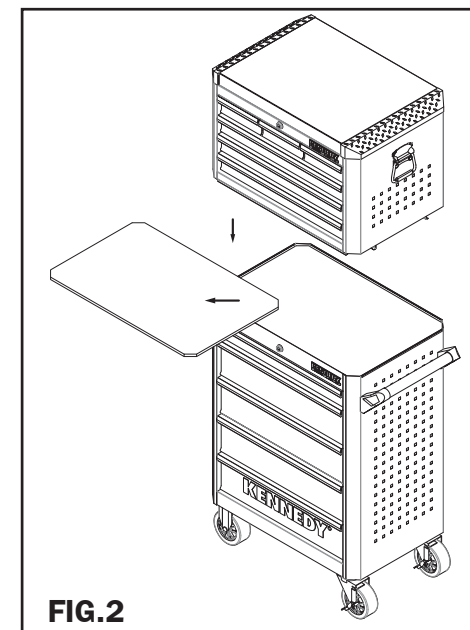


FIG.2

## ASSEMBLY

### HOW TO ASSEMBLE THE 36" 5 DRAWER ROLLER CABINET:

#### BEFORE YOU ASSEMBLE:

Check that you have all the items from the parts list. The parts list and assembly cover the **36" 5 drawer roller cabinet (ORDER CODE: KEN-594-2620K)**

**DO NOT** discard the packaging materials until all parts are accounted for.

#### HOW TO ASSEMBLE THE 36" ROLLER CABINETS:

*Please note: we advise that 2 or more people should assemble the roller cabinet and top chest. See Fig.3 opposite.*

1. Lay the cabinet on it's side on a protective surface. Attach and fasten the casters to the bottom of the cabinet making sure that the swivel casters are on the same side that the handle will be on.
2. Attach and fasten the handle to the side you have attached the swivel casters.

	PART	QTY
1.	 <b>ROLLER CABINET</b>	1
2.	 <b>HANDLE</b>	1
3.	 <b>M6 SCREW</b>	4
4.	 <b>M8 WASHER</b>	16
5.	 <b>M8 SPLIT WASHER</b>	16
6.	 <b>M8*20 BOLT</b>	16
7.	 <b>SWIVEL CASTER</b>	2
8.	 <b>FIXED CASTER</b>	2

## ASSEMBLY

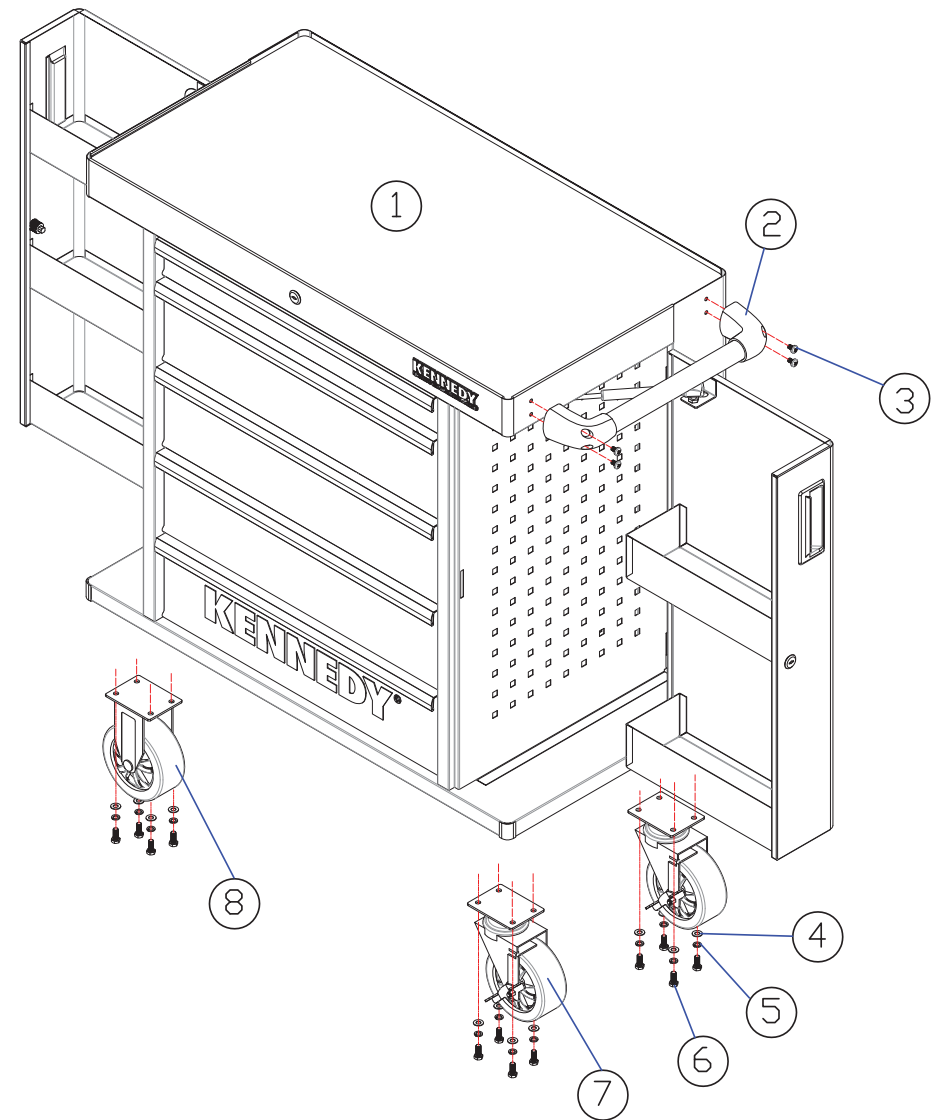


FIG.3