

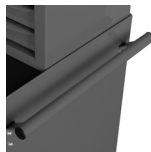
SPARES & ACCESSORIES



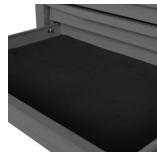
Lock & Key Set
(inc. 2 Keys)
SPR-567-2880K



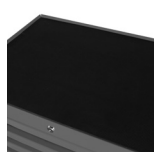
Blank
Key
SPR-567-2260K



Rounded Side
Handle
SPR-567-2900K



2.5mm Drawer
Liner
SPR-567-2810K



5mm EVA Foam
Top Mat
SPR-567-2840K



4 x 100mm PP
Caster Wheels
(2 Fixed, 2 Swivel
with Brake)
SPR-567-2830K



Metal Hinges
(QTY 2)
SPR-567-3290K



Drawer Slides for
Top Chest (QTY 2)
SPR-567-7840K



Drawer Slides for
Cabinets (QTY 2)
SPR-567-7850K

QUALITY GUARANTEE & WARRANTY

SENATOR TOOLS carry a one year manufacturer's warranty.
SENATOR TOOLS are designed and manufactured to the highest of standards and specifications.

Assuring the quality and performance required by all sectors of industry.

SENATOR TOOLS are fully guaranteed against faulty materials and workmanship.

Should they be found to be defective, they will either be repaired or replaced free of charge (fair wear and tear and/or misuse excepted).

Please retain supplier invoice as proof of purchase.

THE ENVIRONMENT



Always dispose of unwanted tools, accessories and packaging materials in an environmentally friendly manner.

Senator Tools continually strives to improve its products. Specifications may change without prior notice.

SENATOR TOOLS Wigston, Leicester, England, LE18 2FS. www.senatortools.com

Senator is a registered trade mark of The Kennedy Group Ltd.

SENATOR® QUALITY TOOLING

ROLLER CABINETS & TOP CHESTS

ORDER CODES

SEN-594-1530K

SEN-594-1550K

SEN-594-1570K

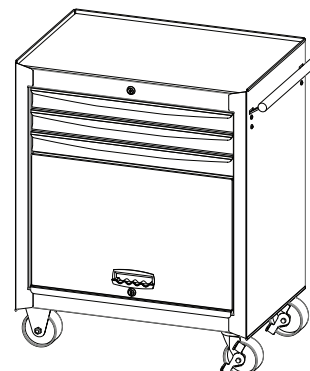
SEN-594-1660K

27" 3 DRAWER ROLLER CABINET - RED

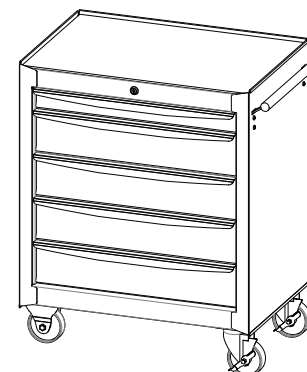
27" 5 DRAWER ROLLER CABINET - RED

27" 7 DRAWER ROLLER CABINET - RED

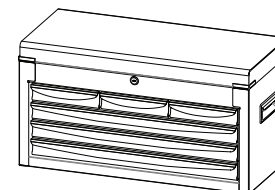
27" 6 DRAWER TOP CHEST - RED



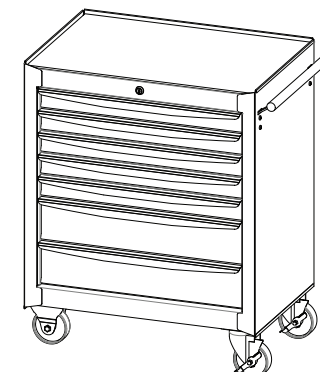
SEN-594-1530K



SEN-594-1550K



SEN-594-1660K



SEN-594-1570K

INSTRUCTION MANUAL

Please retain this information for future reference.

SAFETY INSTRUCTIONS

SENATOR Roller cabinets and top chests are designed to help you work safely and efficiently. Storage equipment can be dangerous if the correct operating procedures are not followed. Safety procedures and assembly instructions are as follows:

- Read, study and understand all warnings and operating instructions before use.
- **DO NOT** alter the product in any way.
- **DO NOT** weld lock bars or dollies onto the unit.
- **DO NOT** mount the roller cabinet or top chest onto any moving object such as a truck, van or lorry etc.

LOADING:

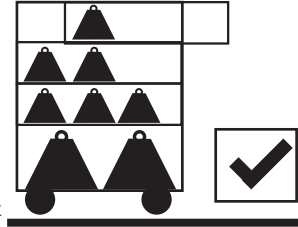
- **DO NOT** load from the top drawer first.
- **DO NOT** drop tools into the drawers.
- **DO NOT** completely fill only one drawer, evenly distribute the weight.
- **DO NOT** load a drawer from the front.
- **DO NOT** exceed the maximum load capacity for the drawers. Please see specifications section for the correct capacity.
- **DO NOT** exceed the maximum load capacity for the castor wheels which includes the product weight and content weight also top chest weight if placing one on top. Please see specifications section for the correct capacity.

USE:

- **DO NOT** open more than one loaded drawer at a time as this may cause the unit to tip and cause serious injury.
- **ALWAYS** apply the brakes on the castor wheels when unit is not in motion.
- **DO NOT** stand on this unit.
- **DO NOT** slam the drawers shut.

MOVEMENT:

- **BEFORE** attempting to move the unit, make sure all drawers are fully closed and locked. Failure to do so may result in serious injury.
- **DO NOT** pull to move the unit, always push.
- **NEVER** tow the unit with any equipment.
- **ALWAYS** place the unit on a flat level surface.



SPECIFICATIONS

	3 DRAWER CABINET	5 DRAWER CABINET	7 DRAWER CABINET	6 DRAWER CHEST
ORDER CODE:	SEN-594-1530K	SEN-594-1550K	SEN-594-1570K	SEN-594-1660K
DRAWER LOAD CAPACITY (EACH):	25kg	25kg	25kg	20kg
DRAWER DIMS (W x L x D mm):	568x398x60	1@ 568x398x60 4@ 568x398x124	5@ 568x398x60 2@ 568x398x124	3@ 168x272x50 3@ 568x272x50
STORAGE LOCKER DIMS (W x D x H mm):	676x424x415	N/A	N/A	N/A
LID COMPARTMENT DIMS (W x L x D mm):	N/A	N/A	N/A	656x301x100
TOTAL DRAWER LOAD CAPACITY:	75kg	125kg	175kg	120kg
STATIC LOAD CAPACITY:	300kg	300kg	300kg	200kg
CASTER WHEEL SIZE (DIA.):	100mm	100mm	100mm	N/A
NET WEIGHT:	28.5kg	35.5kg	39.4kg	19.7kg
DIMENSIONS (W x D x H mm):	678x459x724	678x459x724	678x459x724	660x307x353

ASSEMBLY

BEFORE YOU ASSEMBLE:

Check that you have all the items from the parts list. The parts list and assembly covers all 3 models of the roller cabinets.

The top chest does not require assembly.

DO NOT discard the packaging materials until all parts are accounted for.

HOW TO ASSEMBLE ROLLER CABINET:

Please note: we advise that 2 or more people should assemble the roller cabinet and top chest.

See Fig.1 below.

1. Lay the cabinet on it's side on a protective surface. Attach and fasten the casters to the bottom of the cabinet making sure that the swivel casters are on the same side that the handle will be on.
2. Attach and fasten the handle to the side you have attached the swivel casters.

HOW TO ASSEMBLE TOP CHEST ONTO ROLLER CABINET:

See Fig.2 below.

1. With the top mat remaining placed on the top of the roller cabinet carefully place the tool chest on top of the fully assembled roller cabinet.

	PART	QTY
1.	ROLLER CABINET	1
2.	HANDLE	1
3.	M6 WASHER	4
4.	M6 SCREW	4
5.	M8 WASHER	16
6.	M8 SPLIT WASHER	16
7.	M8*20 BOLT	16
8.	SWIVEL CASTER	2
9.	FIXED CASTER	2

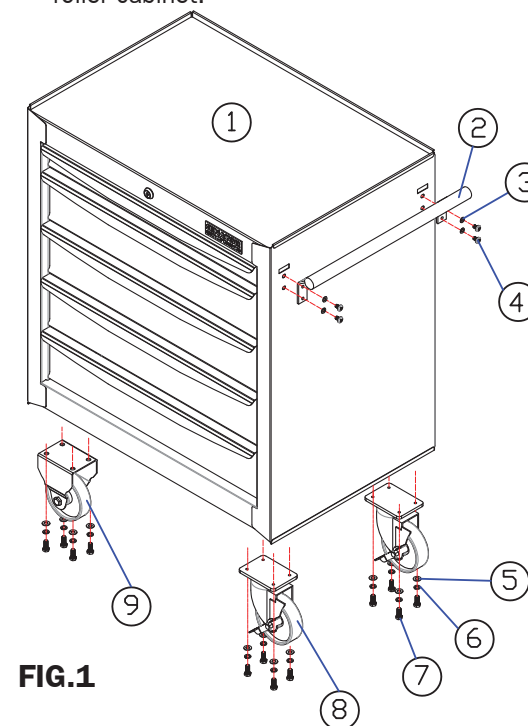


FIG.1

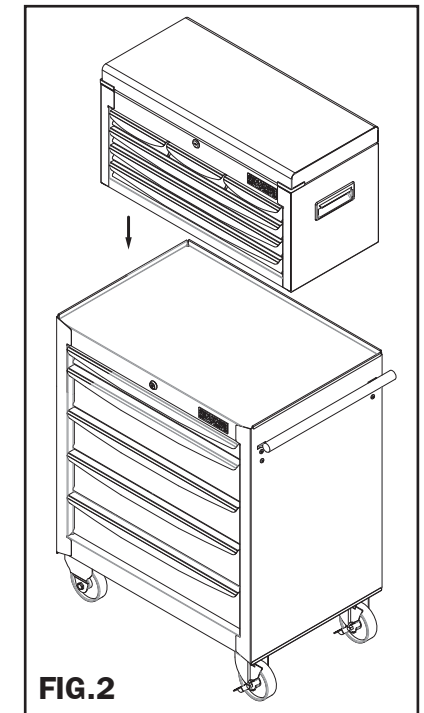


FIG.2